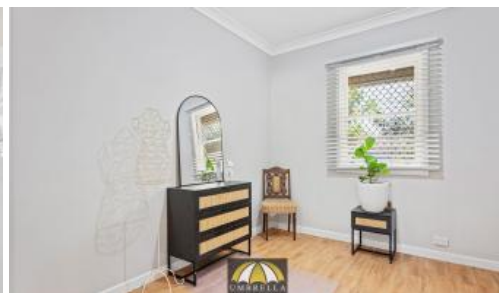


Sold



21 Island Queen St, Withers



## UNDER OFFER - PERFECT INVESTMENT ON A HUGE BLOCK

CURRENTLY UNDER OFFER!

This brick and tile home is simply delightful, combining both modern and 1960s features.

The lounge area has lots of natural light through the quaint 1960s windows as well as reverse cycle air conditioning. Kitchen and dining area is spacious and bright with modern bench tops and clean lines.

Polished timber floorboards are a feature in the main bedroom and second bedroom. The study/dining area could easily be made into a third bedroom by adding doors to the space.

This home is nestled on a 1003m2 corner block and is zoned R20/40.

3 1 2 1,003 m2

Price	SOLD
Property Type	Residential
Property ID	1076
Land Area	1,003 m2

### AGENT DETAILS

Nicole Kelly - 0447 648 842

### OFFICE DETAILS

Umbrella Realty  
1/98 Stirling Street East Bunbury  
WA 6230 Australia  
(08) 9779 9990



With a park across the road, gorgeous established trees through the neighbourhood, public transport at your doorstep and South Bunbury Marketplace only a 6 minute walk/1 minute drive plus a short drive to the beach - this property offers both ease and comfort.

Currently tenanted until 30th August 2024.

This will not last long call Nicole now 0447 648 842.

Umbrella Realty would like to state that no representation or warranties of any nature within this advertisement are given, intended, or implied. Any interested parties should rely on their own inquiries. Note that this listing has virtual furniture. Images of furniture are for illustration purposes only.

The above information provided has been furnished to us by the vendor/s. We have not verified whether or not that information is accurate and do not have any belief in one way or the other in its accuracy. We do not accept any responsibility to any person for its accuracy and do no more than pass it on. All interested parties should make and rely upon their own inquiries in order to determine whether or not this information is in fact accurate.