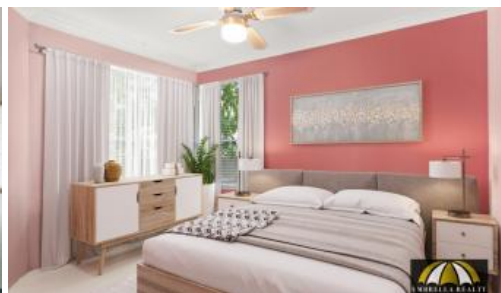


Sold



19 Lilly Ct, Australind



FAMILY HOME IN CUL-DE-SAC - CLOSE TO IT ALL!

This family home is perfect for a new family/couple/ single person looking for a quiet home to grow in to. The house is located in a cul-de-sac with only 12 houses in it.

Just a short walk to a bush path leading to the Leschenault inlet. Just a short 3 minute drive to Shopping Hub with Cafe's, Coles, Aldi, Hairdresser and more. Schools include Australind Primary, Parkfield Primary, Australind High, Leschenault Catholic Primary School just to name a few!

The property is built in 1994 making it a solid brick home located on a 701 sqm block. The main open plan kitchen, living and dining area has ample room for your large "L" shaped lounge, with reverse cycle split system.

The kitchen offers ample storage including walk in pantry, gas cooktop, electric oven and large top - perfect for quick breakfasts. 3 well sized bedrooms all with built-in robes. The main bathroom offers a separate

🛏 3 🚿 1 🚗 1 📏 701 m2

Price	SOLD
Property Type	Residential
Property ID	563
Land Area	701 m2
Floor Area	111 m2

AGENT DETAILS

Celestine Pfuhl - 0435 824 123

OFFICE DETAILS

Umbrella Realty
1/98 Stirling Street East Bunbury
WA 6230 Australia
(08) 9779 9990



shower and bath. In addition the home has two toilets.

The outdoor patio area is perfect for weekend BBQ;s and to watch the kids in the rear garden. There is a large powered shed as well perfect for a man cave or workshop.

The property is currently tenanted therefore please call Celestine on 0435 824 123 to arrange a viewing.

Umbrella Realty would like to state that no representation or warranties of any nature within this advertisement are given, intended, or implied. Any interested parties should rely on their own inquiries. Note that this listing has virtual furniture. Images of furniture are for illustration purposes only.

The above information provided has been furnished to us by the vendor/s. We have not verified whether or not that information is accurate and do not have any belief in one way or the other in its accuracy. We do not accept any responsibility to any person for its accuracy and do no more than pass it on. All interested parties should make and rely upon their own inquiries in order to determine whether or not this information is in fact accurate.