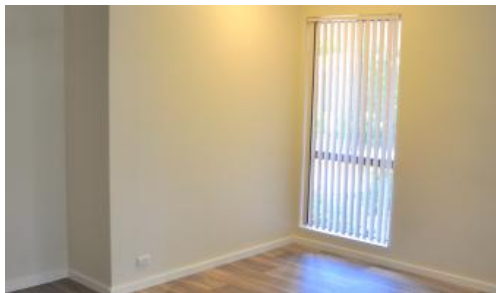
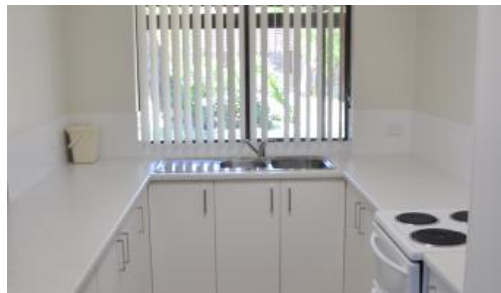


Leased



31 Poller Way, Australind



QUIET STREET IN CLIFTON PARK - NEAT AS A BUTTON

🛏 3 🚿 1 🚗 1

Price \$400 Per Week

Property Type Rental

Property ID 694

This property offers a lovely, peaceful retreat away from the hustle and bustle but still only moments from shops, schools and parks! Offering ample living space and a fully fenced yard this one won't last long!

Property Features Include:

- Main lounge with wood combustion heater AND a reverse cycle split system;
- Seperate dining area with a serving window to the kitchen;
- An additional lounge area with modern vinyl flooring;
- Modern kitchen with electric cooktop and oven, ample storage and double sink over looking the rear garden;
- The main bedoom offers large built in with 4 doors and ceiling fan. The other bedrooms also have built-ins;
- There is direct access to the rear line from the laundry and the toilet is seperate from the main bathroom;

AGENT DETAILS

Jorgia Whitham - 0423 011 608

Umbrella Realty - 08 9779 9990

OFFICE DETAILS

Umbrella Realty

1/98 Stirling Street East Bunbury

WA 6230 Australia

(08) 9779 9990



- The main bathroom is spacious and offers a shower and vanity;
- The rear yard is large and all reticulated! There are two sheds one is approximately 5.2m x 2.2m the other 2.5m x 2.5m.
- Pets Considered.

Please call Umbrella Realty on (08) 9779 9990 if you have any questions or to arrange a viewing.

Application Forms can be found on our website <http://umbrellarealty.com.au/> collected from the office, through 2apply or will be available at the viewing. To be prepared for the application process be sure to have 100 points of ID and proof of income. The property must be viewed prior to submitting an application.

The above information provided has been furnished to us by the vendor/s. We have not verified whether or not that information is accurate and do not have any belief in one way or the other in its accuracy. We do not accept any responsibility to any person for its accuracy and do no more than pass it on. All interested parties should make and rely upon their own inquiries in order to determine whether or not this information is in fact accurate.