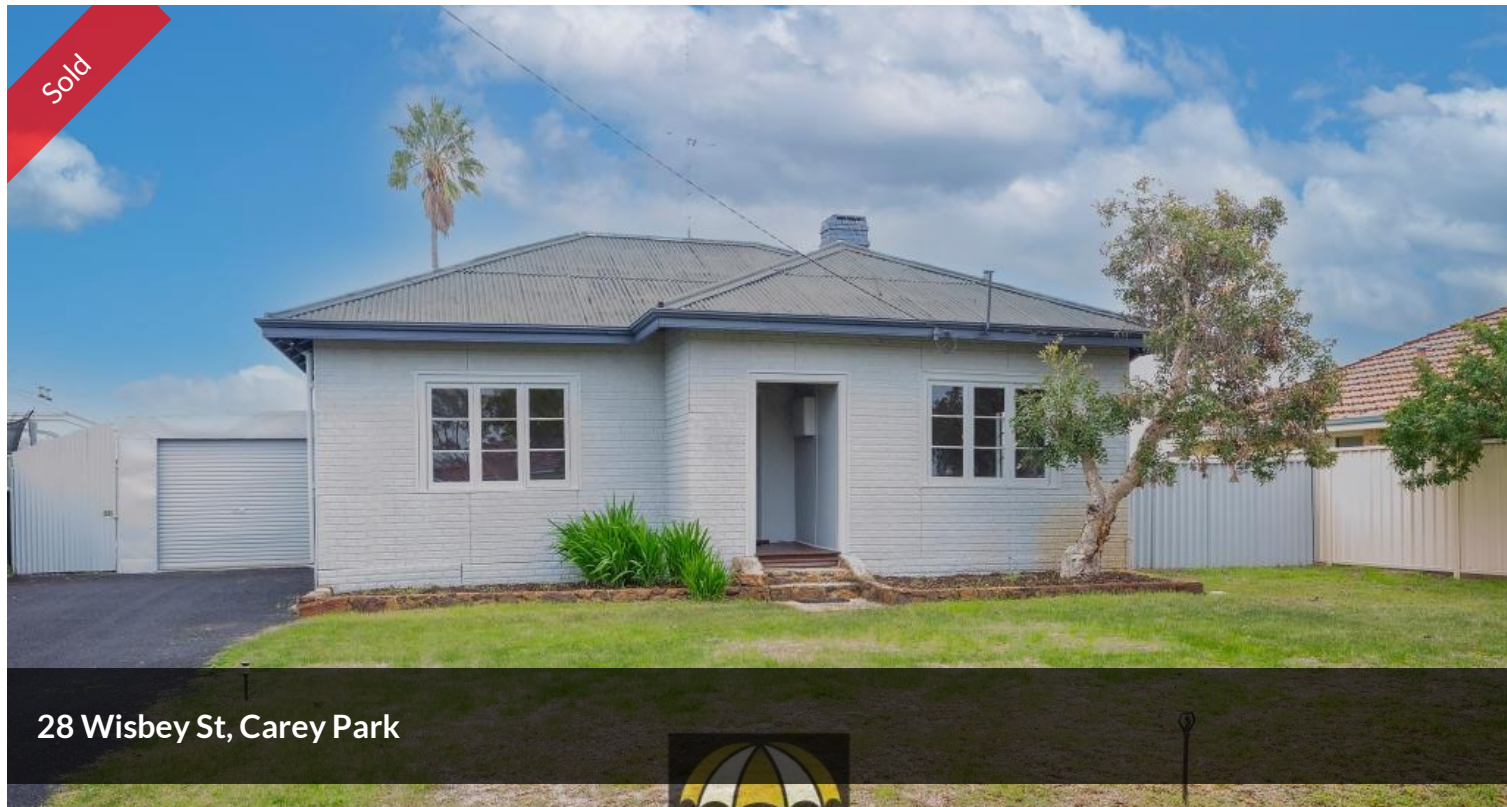
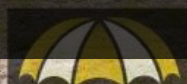


Sold



28 Wisbey St, Carey Park



ENDLESS OPPORTUNITIES!

This gorgeous home is located in the heart of Carey Park and is perfect for an investor, developer or first home buyer. Offering classic mid 1900's period features such as thick jarrah floor boards, high ceilings, large spacious rooms. The home has been freshly painted throughout and has recently been re-wired.

Located on a large 1012m2 zoned R20/40 is also the perfect home to subdivide and fit 4 dwellings on (STCA). You could live in the house whilst covering the mortgage or rent it out for a few years whilst planning future development.

The property offers large windows offering ample natural light throughout. The living room has a woodfire heater and the kitchen and bathroom are neat and tidy. There is a patio perfect for entertaining and the rear yard is fully fenced with a cubby house.

Contact Jorgia today for a viewing on 0423 011 608

3 1 2 1,012 m2

Price	SOLD
Property Type	Residential
Property ID	774
Land Area	1,012 m2

AGENT DETAILS

Jorgia Whitham - 0423 011 608
Celestine Pfuhl - 0435 824 123

OFFICE DETAILS

Umbrella Realty
1/98 Stirling Street East Bunbury
WA 6230 Australia
(08) 9779 9990



Council Rates - \$1869.08

Water Rates - \$1250.27

Umbrella Realty would like to state that no representation or warranties of any nature within this advertisement are given, intended, or implied. Any interested parties should rely on their own inquiries. Note that this listing has virtual furniture. Images of furniture are for illustration purposes only.

The above information provided has been furnished to us by the vendor/s. We have not verified whether or not that information is accurate and do not have any belief in one way or the other in its accuracy. We do not accept any responsibility to any person for its accuracy and do no more than pass it on. All interested parties should make and rely upon their own inquiries in order to determine whether or not this information is in fact accurate.