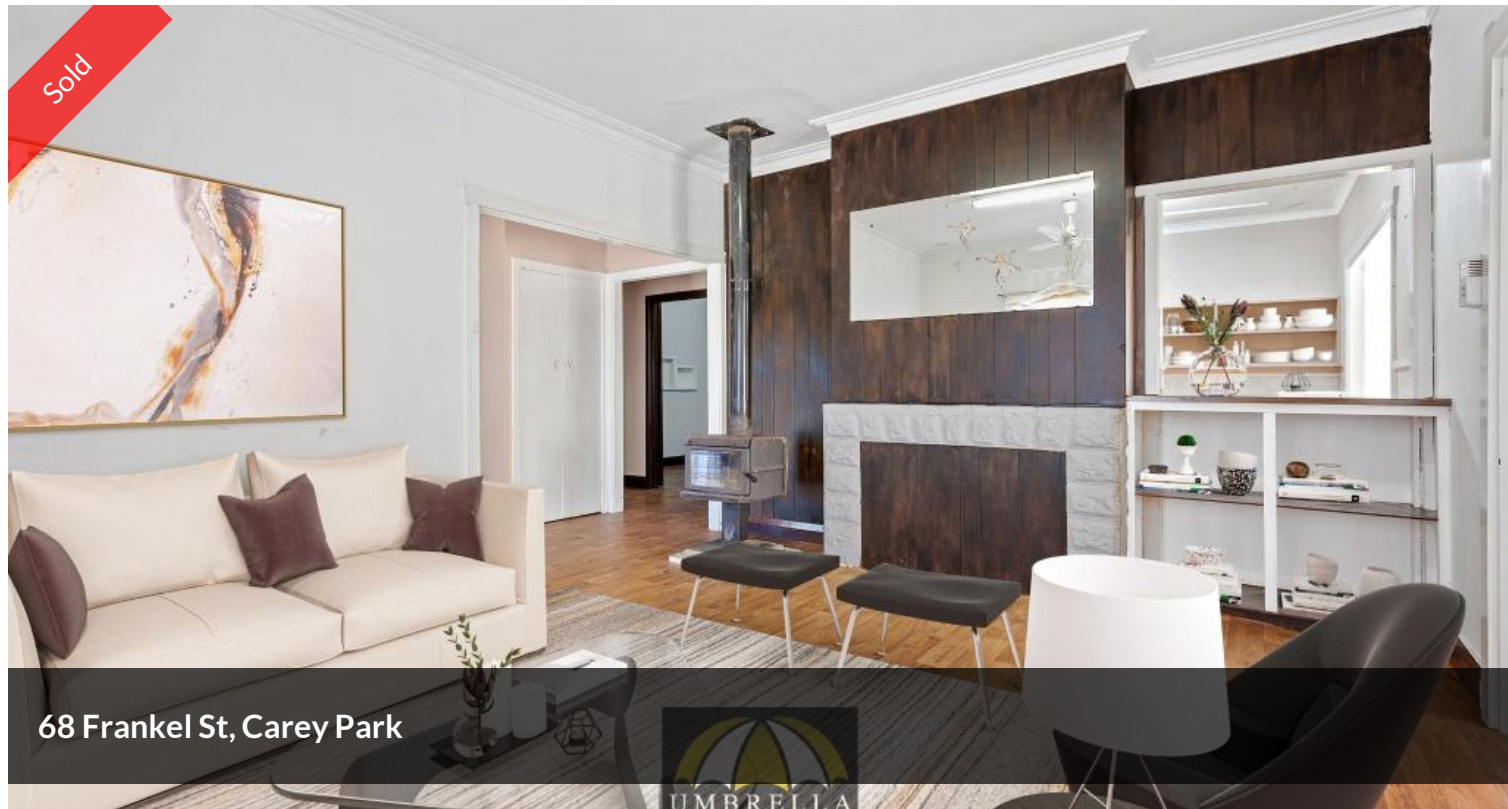


Sold



68 Frankel St, Carey Park



DEVELOPERS/ INVESTORS / FIRST HOME BUYERS

This home offers all of the character and charm of a 1950's home, offering high ceilings, jarrah trim and large rooms sizes.

This large block would be a perfect investment for a first home buyer or an investor thinking of the future potential.

This home is zoned R40 and is a corner lot meaning with the current house being demolished you would be able to build 4 units (Subject to Council Approval).

Contact Celestine today to arrange a viewing on 0435 824 123.

Umbrella Realty would like to state that no representation or warranties of any nature within this advertisement are given, intended, or implied. Any interested parties should rely on their own inquiries. Note that this listing has virtual furniture. Images of furniture are for illustration purposes only.

3 1 2 1,095 m2

Price	SOLD
Property Type	Residential
Property ID	901
Land Area	1,095 m2

AGENT DETAILS

Celestine Pfuhl - 0435 824 123

OFFICE DETAILS

Umbrella Realty
1/98 Stirling Street East Bunbury
WA 6230 Australia
(08) 9779 9990



The above information provided has been furnished to us by the vendor/s. We have not verified whether or not that information is accurate and do not have any belief in one way or the other in its accuracy. We do not accept any responsibility to any person for its accuracy and do no more than pass it on. All interested

parties should make and rely upon their own inquiries in order to determine whether or not this information is in fact accurate.